

e *An active and high-powered company
pursuing the possibilities of the electron beam*



NHV Corporation

Providing solutions through technology for a more prosperous tomorrow...

NHV Corporation, formally known as Nissin High Voltage Co. Ltd. has been providing its customers with particle accelerator equipment for more than 30 years. We have extensive knowledge, and experience in the fields of, Electron Accelerators, High Voltage Power Supply Technology, and Testing Equipment. All of these technologies are being used today to help manufacturers improve their products, by providing stronger, safer, healthier, and more energy efficient, consumer products.



President
Yasuhisa Hoshi

Today there is a new awareness by the public to, save energy, provide less damaging materials by removing toxins that are harmful, and to preserve the environment by using green technologies. NHV Corporation has put a tremendous effort into this area, in cooperation with its customers, to meet this growing need. In particular NHVC as a worldwide supplier of Electron Beam Processing equipment is demonstrating how this technology can be used to meet the manufacturing demands for greener products.

NHV Corporation has its electron beam processing equipment operating in more than 20 countries around the world, and we are committed to the continuation of our global expansion through our overseas operations. We understand that the source of our strength comes from our customers, and we believe your input is critical; this is how we know when we need to make improvements, which will enable us to grow.

I would like to take this opportunity to thank all of our customers, and future new customers for your continued support of our products and services.



The Power of C³

NHV Corporation's guiding Principles are governed by the 3Cs (**Customer Satisfaction, Creativity, Challenge**). We are working as one to generate worthwhile products, and strive to contribute to a more prosperous tomorrow while satisfying and earning the trust of our customers around the world.

E

lectron beam

The Leading Company in Electron Beams



From
Kyoto, Japan



A half century has passed since 1957 when we started to develop electron beam processing systems (EPS). We are proud to say that we have now delivered many EPS products.

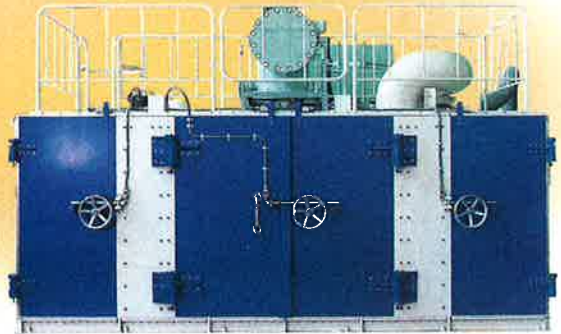
Almost half a century has passed since development was initiated on EPS in the ancient Japanese capital of Kyoto. Now, we can take pride in a large number of EPS installed worldwide. As the leading manufacturer of EPS, we have gained the trust of our customers by building up our original technology and expertise, and running a consistent cycle of development, design, production and maintenance for devices in all fields of application.

In the "environmental age" of the 21st century, the application technology of EPS is drawing more attention as a clean and highly reliable technology that can support the expansion of a variety of industries. We will pursue the possibilities of EPS applications to contribute to the fields of energy and the environment, developing new materials in anticipation of this age's needs, and adding higher value to products.

No.1
Record for EPS
Installations

EPS

Electron beam Processing System



Contribution to Environmental Preservation



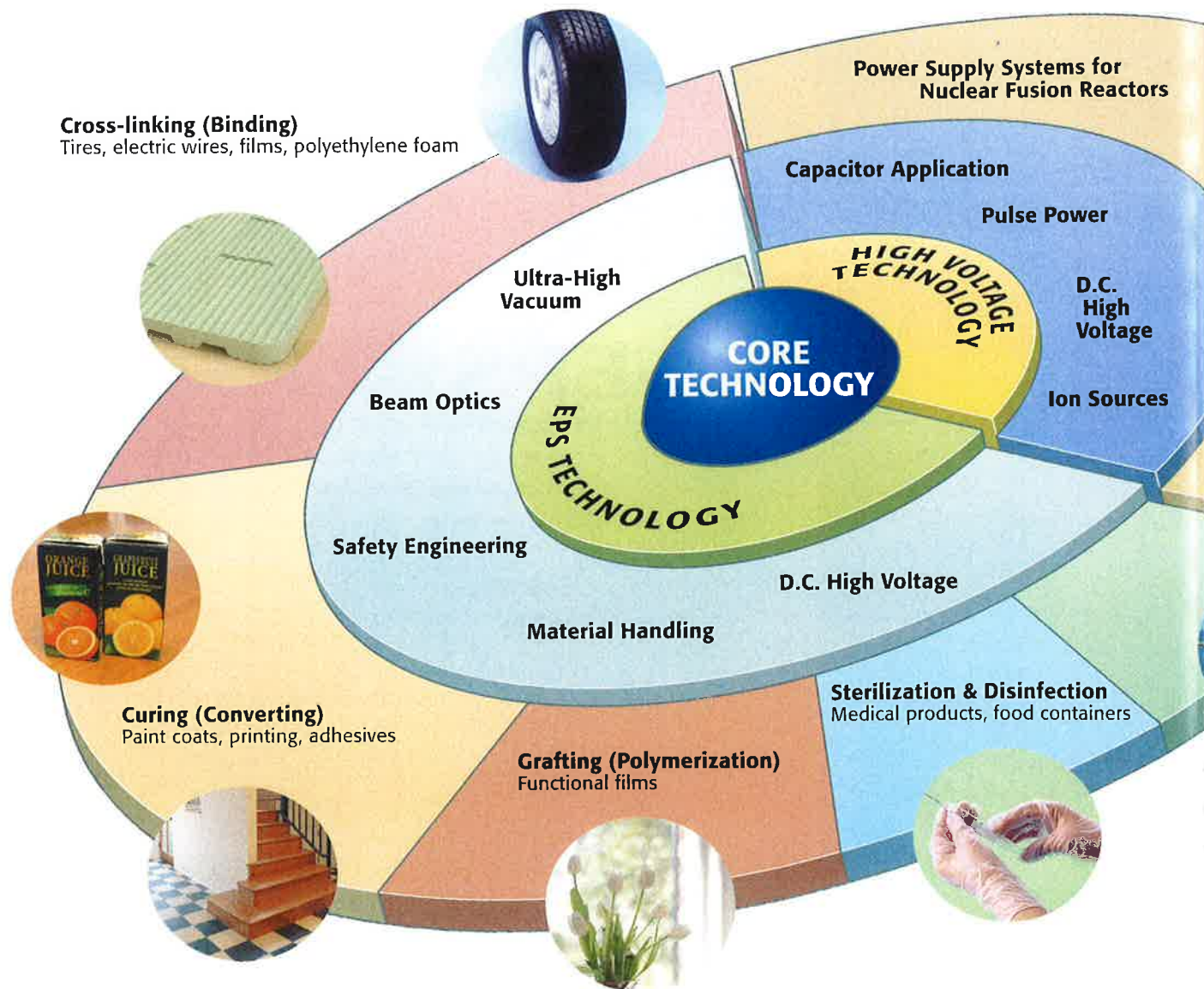
Electron beam (EB) processing is a technology that utilizes the energy of electrons accelerated in a high voltage electric field to ionize and excite the molecules of various materials, resulting in a chemical reaction. In industrial products, for example, processing which was impossible with energy derived from heat or light can now be achieved easily, uniformly and high efficiently using EB energy.

With increasing awareness of such issues as global environmental destruction and exhaustion of energy resources, we are committed to providing technologies and services that contribute to global environmental preservation through clean and environmentally-friendly applications of electron irradiation technologies and high-performance, high-voltage technologies. Such efforts include development and production of adsorbents that remove hazardous materials.

Accelerating towards a rich and precious future

The NHV Corporation group

Utilizing the specialized technology and know-how acquired from the technologies of high voltage power supply systems and electron accelerators, the Energy and Environment business and the Electron beam Processing System business will form the core businesses of NHV Corporation. We will also take up the challenge of establishing a Product Processing business based on software and applications of these technologies.



Electron beam Processing Systems (EPS) Business

In addition to conventional applications such as cross-linking to improve the heat resistance of electric wires and enhancing the quality of polyethylene foam and automotive tires, Electron beam Processing Systems (EPS) are also used to modify wrapping films. There has been an especially remarkable development in the field of low energy systems, leading to widespread use in specialized printing, adhesives and transfer films. EPS have many other uses such as the removal of toxic substances in the air, sterilizing and disinfecting medical products instead of the method using poisonous gas, changing the characteristics of semiconductors and killing insects on imported cut flowers. It has made a wide-ranging contribution to various fields of industry by increasing the performance and adding to the value of processed materials.

ScanningType Electron Beam Processing System

It is used in a wide range of fields including electric wire, chemistry, steel, automobiles and medical equipment. It can be used in special production lines, and for research and development of state-of-the-art technologies and many other purposes.



Area Beam Type Electron Beam Processing System (CURETRON)

It is used for production of functionalized film, adhesive tape and exfoliate paper, and for ink curing and other purposes. It is equipped with a conveyor, inert gas atmosphere system, oxygen measuring instrument and X-ray shielding

Haefely Test AG Test Systems

Charge / Discharge Power Supply Sys

Klystron Modu

Ion Sources



Environmental Preservation

Removal of toxic substances in the air

EB irradiation Services

We provide all manner of processing needs including R & D tests, sample irradiation and toll irradiation services.

- Our EB Centers are conducting research and development and providing experimental assistance for such purposes as improvement of the properties of various materials, strengthening of coatings and adhesives, and disinfection of packaging materials.
- We provide irradiation services for customers who do not have EPS facilities.
- Our lineup of irradiation systems, including peripheral equipment, caters to various applications. Because such systems are equipped with coaters and laminators, it is possible to conduct continuous processing of films, webs, pipes and tubes



The technologies and service of professionals

Complete Project Support

1 Project Management

NHV Corporation (NHVC) provides each customer with a senior project team that is committed to follow the EPS project from conception to completion. NHVC will work directly with the customers, engineers and scientists to ensure that production, quality and start-up goals are met.

2 Design and Production

By reviewing the needs of our customer, we can propose optimized designs to meet their specific requirements. We can prepare technical materials such as layout drawings, detailed equipment drawings and X-ray shielding analyses, and other relevant materials necessary for applying to the public authorities for permission to use.

3 Equipment Manufacture and Testing

NHVC will provide the customer with a manufacturing schedule detailing the specific times for the construction, assembly, and completion of the EPS equipment. In addition, if decided by the customer, a factory test will be done to demonstrate the EPS performance. The customer may also want to witness these tests and is welcome to attend. On the successful completion of the factory test, the EPS is packed for shipment to the customer's site.

4 Supervision On Site

NHVC will send a qualified technician to supervise the installation of the EPS at the customer's site. The installation schedule is again designed to meet the specific production start date as designated by the customer. The supervisor will work with the customer's team to check all the various operations of the system. The final on-site test work will demonstrate the EPS capability over the guaranteed operating range of the system.

5 Training of Customer Personnel

In addition to supervising the installation of the EPS equipment, the NHVC technician will provide training for the customer's operations and maintenance personnel. The on-the-job training technique has proven to be the best and most reliable way to train the personnel that will be directly involved in the maintenance and operation of the EPS. Customers may also choose to send their personnel to the factory for training (This is a customer option).

6 Continuing Support

NHVC provides, as part of its commitment to its customers, a worldwide service and support network. The support network include service technicians and spare parts strategically located to provide our customers with the service necessary and when required to keep our equipment operating throughout the world.

EB Center

How to use this service

For inquiries, please contact us at the EB Processing Service Centers. We will send you a detailed brochure or explain our irradiation methods.



Kyoto EB Processing Service Center

47, Umezu-takase-cho, Ukyo-ku, Kyoto 615-8686, Japan
TEL. +81-75-864-8815
FAX. +81-75-882-1304



Maebashi EB Processing Service Center

2121, Soja, Soja-machi, Maebashi, Gunma 371-8515, Japan
TEL. +81-27-280-6341
FAX. +81-27-280-6342



Kyushu EB Processing Service Center

3-2 Fujinoki-machi, Tosu-shi, Saga 841-0048, Japan
TEL. +81-0942-50-5230
FAX. +81-0942-50-5130

All information provided by the client will be kept strictly confidential.

If the client wishes, they can be present during the irradiation process.

For clients in remote locations, a sample piece of material can be sent to us, which we will return after irradiation.

Affiliated Company

NHV Corporation SHANGHAI (NHVS)



To expand our Electron Beam Processing System (EPS) business in China, we are engaged in EPS production, sales and after-sales support directed toward local Chinese Corporations.

Established September 7th, 2005
Stated Capital 920 thousand dollars
(100% owned subsidiary of NHV Corporation)
Location No. 958 Hui Jin Road Qingpu District
Shanghai 201700 P.R. China
TEL. +86-21-6921-0351
FAX. +86-21-6921-1324
HP. <http://www.nhvschina.com>

NHV AMERICA, INC. (NHVA)



To strengthen our EPS business in the United States, we are engaged in the sales and after-sales support of NHV Corporation's products.

Established August 8th, 1988
Stated Capital 500 thousand dollars
Location 100, Griffin Brook Drive, Methuen, MA
01844, U.S.A.
TEL. +1-978-682-4900
FAX. +1-978-682-3801

Nissin Pulse Electronics Co., Ltd. (NPE)



We are engaged in the production, sales and after-sales support of high voltage equipment such as high voltage test systems and high voltage power supplies. We also sell Haefely Test AG's products.

Established November 12, 1968
Stated Capital 12 million yen
(100% owned subsidiary of NHV Corporation)
Location 2744-3 Yamazaki, Noda City, Chiba 278-0022,
Japan
TEL. +81-4-7123-0611
FAX. +81-4-7123-0620
HP. <http://www.mmjp.or.jp/peec/>



NHV Corporation

<http://www.nhv.jp>

Head Office & Plant 47, Umezu-takase-cho, Ukyo-ku, Kyoto 615-8686, Japan
TEL. +81-75-864-8801 FAX. +81-75-882-1520

Maebashi Works 2121, Soja, Soja-machi, Maebashi, Gunma 371-8515, Japan
TEL. +81-27-254-1101 FAX. +81-27-254-1105

Sales & Marketing Dept. (Tokyo) Kandaizumi-cho Bldg., 1, Kandaizumi-cho,
Chiyoda-ku, Tokyo 101-0024, Japan
TEL. +81-3-5821-5909 FAX. +81-3-5821-0380

(Kyoto) 47, Umezu-takase-cho, Ukyo-ku, Kyoto 615-8686, Japan
TEL. +81-75-864-6831 FAX. +81-75-882-1301

**Products are also available through
Nissin Electric Co., Ltd.**

Affiliated Company NHV AMERICA, INC.
100, Griffin Brook Drive, Methuen, MA 01844, U.S.A.
TEL. +1-978-682-4900 FAX. +1-978-682-3801

NHV Corporation SHANGHAI <http://www.nhvschina.com>
No.958, Hui Jin Road, Qingpu District, Shanghai,
201700, P.R.China
TEL. +86-21-6921-0351 FAX. +86-21-6921-1324

Nissin Pulse Electronics Co., Ltd. <http://www.mmjp.or.jp/peec/>
Head Office & Plant
2744-3 Yamazaki, Noda City, Chiba 278-0022, Japan
TEL. +81-4-7123-0611 FAX. +81-4-7123-0620
Kansai Regional Office
Hashimoto Building 4F, 1-5-5 Tanabe Chuo, Kyotanabe City,
Kyoto 610-0334, Japan
TEL. +81-774-65-4817 FAX. +81-774-65-4819
